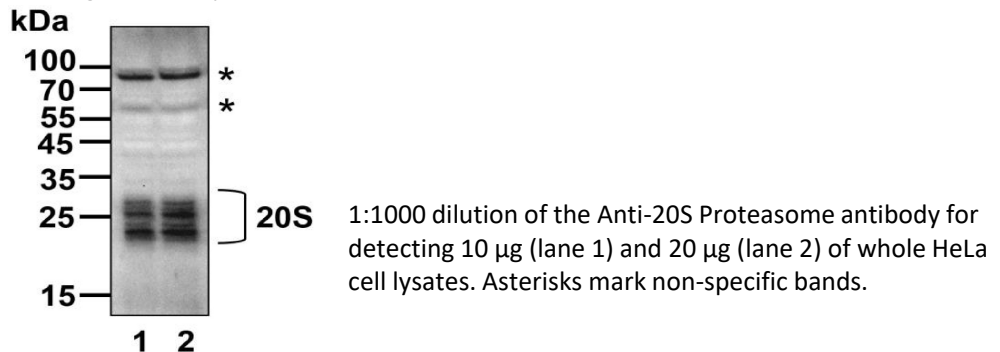


# Anti-20S Proteasome

Cat. # Y2010, Y2011

- Also Known as:** Anti-20S Proteasome Rabbit Polyclonal Antibody
- Clone** N/A
- MW:** ~55/25 kDa
- Species:** N/A
- Immunogen:** Bovine 20S proteasome
- Concentration:** 2 µg/µl
- Stock Buffer:** 10 mM PBS (pH 7.2), 10% Glycerol, 0.09% NaN<sub>3</sub> (sodium azide)
- Specificity:** Recognizes human, bovine and mouse 20S proteasome; other species has not been
- Purification:** Protein A affinity chromatography
- Applications:** WB
- Quality Assurance:** Guaranteed for detecting endogenous 20S proteasome in 20 µg cell or tissue lysates
- Working Conditions:** WB (with ECL) 1:1000-2000 dilution  
IS: 1:500-2000 dilution  
For best results with other assays (e.g.: Dot, ELISA, etc), please determine optimal working dilution by titration test

**Image:**



- Storage:** Store at -20°C. Centrifuge after first thaw to maximize product recovery. Aliquot to avoid repeated freeze-thaw cycles.
- Note:** N/A

